

# THUNDER

## LASER NZ

### Product Features

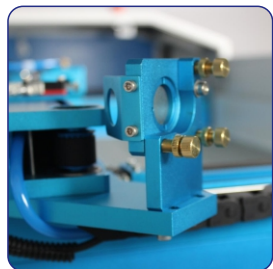
- 130W CO<sub>2</sub> glass laser tube
- 1300 x 900mm work area
- High speed hybrid motors
- Motorised Z axis table
- Rotary ready
- Pass-through door design
- Red Dot pointer
- Dual Air Assist

### Safety Features

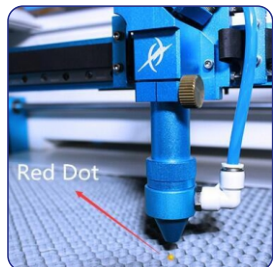
- Two Fire detectors fitted
- Open cover protection
- Status lamp
- Emergency stop

### Our Support

- Parts available in NZ
- NZ-wide backup & support
- 24 month warranty on parts
- 12 month warranty on laser tube
- 30 day warranty on the lens



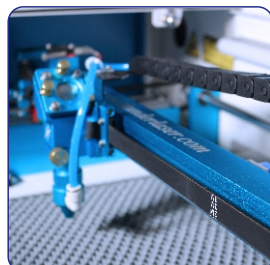
**Beam adjustment**  
Fine pitch adjustment for the mirrors to maintain perfect beam alignment



**Visible Red Dot Pointer**  
See exactly where your laser will cut and engrave



**Emergency Stop**



**High quality X & Y rails**  
Faster speeds and high quality results with vector cutting and raster engraving



**Lightburn software**  
Better software for laser cutters.



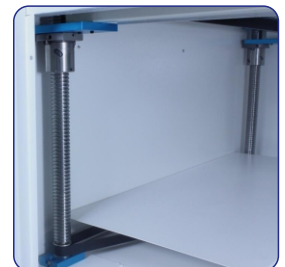
**Industrial water cooling**  
Keeps the laser tube temperature regulated

# NOVA 51

NZD **\$24,155.00** +gst



**LCD control panel**  
Simple operation, files saved in the controllers memory



**Z Axis work table**  
230mm of depth.

# THUNDER

## LASER NZ

Thunder Laser New Zealand offers high quality machines with after sales support for parts and service.

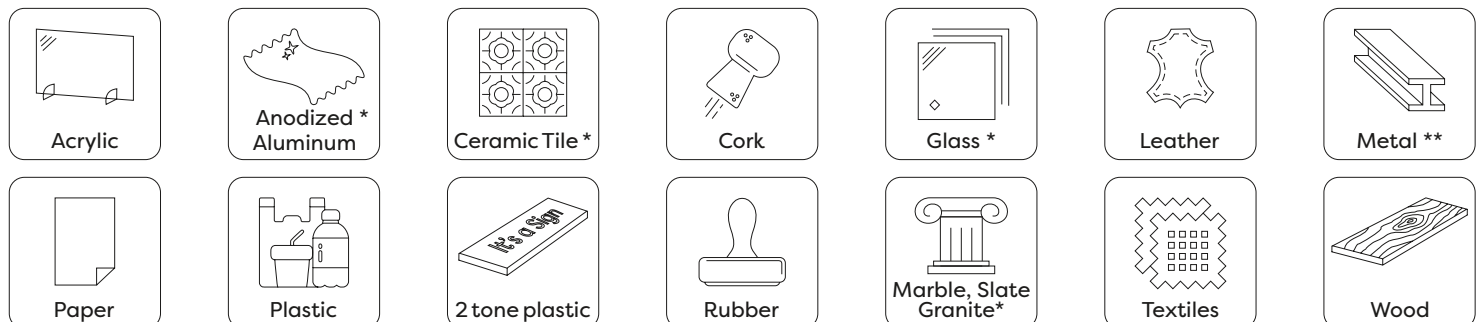
The 130W Nova 51 is a CO<sub>2</sub> laser that can cut and engrave a wide variety of projects. Our machines deliver exceptional results across many industries including, manufacturing, design, hobbyists, and education.

### Specifications

Laser Source:	130W CO <sub>2</sub> sealed glass tube (DC excited)
Work Area:	1300 x 900mm (51.2 x 35.4")
Z axis height:	230mm
Dimensions WxDxH:	Front door closed: 1900 x 1405 x 1040mm
Net Weight:	430kgs
Operating Modes:	Optimized raster (engraving), vector (cutting)
Display Panel:	3" LCD showing current file, total working time, power, and speed settings
Maximum Speed:	1000mm/s (40 IPS)
Rotary Compatible:	Yes
Computer requirements:	Windows 7 or later, macOS 10.11 or later, and certain 64 bit Linux
File Formats:	Lightburn supports AI, BMP, DXF, JPG, PDF, PNG, SVG, TIF and many other formats
Computer interface:	USB, Ethernet
Cooling:	Water cooled
Motor:	High-speed closed-loop hybrid encoded motors
Dual Air Assist:	Low and High air pressure, software controlled in Lightburn by layer
Electrical requirements:	230 volts, 50 Hz, single phase
Ducting requirements:	8" (200mm) - we recommended dedicated, vertical discharge, hard ducting ITS Ltd can recommend suppliers and contractors to assist with this

### Materials

Thunder Laser CO<sub>2</sub> laser's can cut and engrave a variety of materials, including:



\* Engrave only / \*\* Engraving using a marking solution

## NOVA 51

NZD \$24,155.00 +gst



### Optional Extras

**Rotary** - 3 jaw chuck with tail end stock  
Dimensions: (WxDxH) - 600 x 150 x 170mm  
Maximum Part Size:  
Length 290mm / Diameter 100mm  
**\$795**

**HR Head**  
(for high resolution engraving)  
**\$525**

**4" Head**  
(for cutting material over 10mm)  
**\$395**

**1.1kW Oil free air compressor**  
with moisture trap and regulator  
**\$795**

**BlazeCut - 3.0m**  
**\$505**

**Installation, and basic training**  
from **\$800**  
plus any travel expenses  
*Extra training is available by appointment*

**Prices ex GST**  
**Pricing valid 31 Dec 2025**  
**until June 2026**