

Product Features

- 60W RF metal laser tube
- 900 x 600mm work area
- Motorised Z axis table
- Pass-through door design
- Red Dot pointer
- Dual Air Assist with air pressure monitoring
- Rotary ready
- Comes with overhead Camera as standard

Safety Features

- Two Fire detectors fitted
- Open cover protection
- Status lamp
- Emergency stop

Our Support

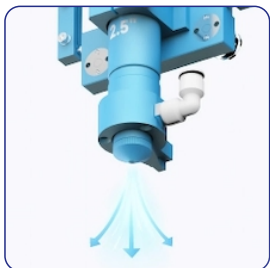
- Parts available in NZ
- NZ-wide backup & support
- 24 month warranty on parts
- 12 month warranty on laser tube
- 30 day warranty on the lens

NOVA Plus 35 60w RF

NZD **\$19,950.00**
+gst



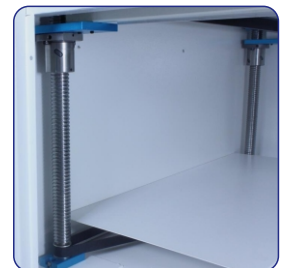
RF Metal Tube
Exceptional beam quality, accuracy and long life span.



Auto Focus
Cone-head touch auto-focus system
(Also has manual focus tool)



LCD control panel
Simple operation, files saved in the controllers memory



Z Axis work table
255mm of depth.



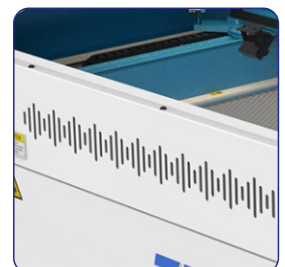
Emergency Stop



Dual Air Assist
High / Low air pressure with air pressure sensor interlock.
(Laser cannot fire if there is no air assist.)



Lightburn software
Better software for laser cutters.



Air Intake
Redesigned front air intake to boost smoke and fume extraction

Thunder Laser New Zealand offers high quality machines with after sales support for parts and service.

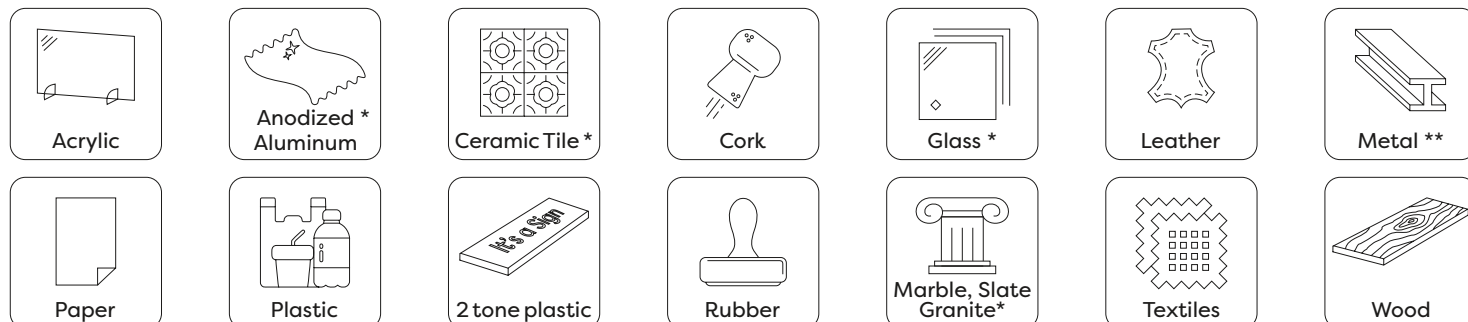
The 60W RF Nova Plus 35 is a next generation CO₂ laser that delivers faster cutting speeds than traditional 80W DC-excited laser tubes, while also delivering exceptional engraving results. Its advanced RF metal tube provides incredible precision and detail - offering the best of both worlds in speed and quality. Perfect for manufacturing, design, education and hobby use, this machine sets a new benchmark in performance and versatility.

Specifications

Laser Source:	60W RF Metal Laser
Work Area:	900x 600mm (35.4 x 23.6")
Z axis height:	225mm
Dimensions WxDxH:	Front door closed: 1520 x 1152 x 1115mm
Net Weight:	273kgs
Operating Modes:	Optimized raster (engraving), vector (cutting)
Display Panel:	3" LCD showing current file, total working time, power, and speed settings
Maximum Speed:	1200mm/s (46 IPS)
Rotary Compatible:	Yes
Computer requirements:	Windows 7 or later, macOS 10.11 or later, and certain 64 bit Linux
File Formats:	Lightburn supports AI, BMP, DXF, JPG, PDF, PNG, SVG, TIF and many other formats
Computer interface:	USB, Ethernet
Cooling:	Air cooled
Motor:	LeadShine Hybrid-Servo Motors
Dual Air Assist:	Low and High air pressure, software controlled in Lightburn by layer
Electrical requirements:	230 volts, 50 Hz, single phase
Ducting requirements:	6" (150mm) - we recommended dedicated, vertical discharge, hard ducting ITS Ltd can recommend suppliers and contractors to assist with this

Materials

Thunder Laser CO₂ laser's can cut and engrave a variety of materials, including:



* Engrave only / ** Engraving using a marking solution

NOVA Plus 35

60w RF

NZD \$19,950.00 +gst



Optional Extras

Rotary - 3 jaw chuck with tail end stock
Dimensions: (WxDxH) - 600 x 150 x 170mm
Maximum Part Size:
Length 290mm / Diameter 100mm
\$795

1.5" Head
(for high resolution engraving)
\$445

4" Head
(for cutting material over 10mm)
\$445

1.1kW Oil free air compressor
with moisture trap and regulator
\$795

BlazeCut - 2.0m
\$440

Installation, and basic training
from **\$800**

plus any travel expenses
*Extra training is available
by appointment*

Prices ex GST
Pricing valid 1 Jun - 31 Dec 2025