

# THUNDER

## LASER NZ

### Product Features

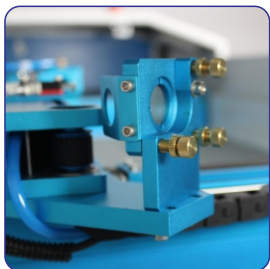
- 130W CO<sub>2</sub> glass laser tube
- 1600 x 1000mm work area
- High speed hybrid motors
- Motorised Z axis table
- Rotary ready
- Pass-through door design
- Red Dot pointer

### Safety Features

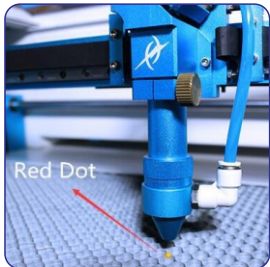
- Two Fire detectors fitted
- Open cover protection
- Status lamp
- Emergency stop

### Our Support

- Parts available in NZ
- NZ-wide backup & support
- 24 month warranty on parts
- 12 month warranty on laser tube
- 30 day warranty on the lens



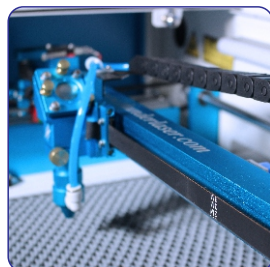
**Beam adjustment**  
Fine pitch adjustment for the mirrors to maintain perfect beam alignment



**Visible Red Dot Pointer**  
See exactly where your laser will cut and engrave



**Emergency Stop**



**High quality X & Y rails**  
Faster speeds and high quality results with vector cutting and raster engraving



**Lightburn software**  
Better software for laser cutters.



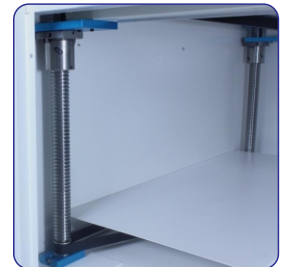
**Industrial water cooling**  
Keeps the laser tube temperature regulated

# NOVA 63

NZD **\$27,435.00**  
+gst



**LCD control panel**  
Simple operation, files saved in the controllers memory



**Z Axis work table**  
230mm of depth.

# THUNDER

## LASER NZ

Thunder Laser New Zealand offers high quality machines with after sales support for parts and service.

The 130W Nova 63 is a CO<sub>2</sub> laser that can cut and engrave a wide variety of projects. Our machines deliver exceptional results across many industries including, manufacturing, design, hobbyists, and education.



### Specifications

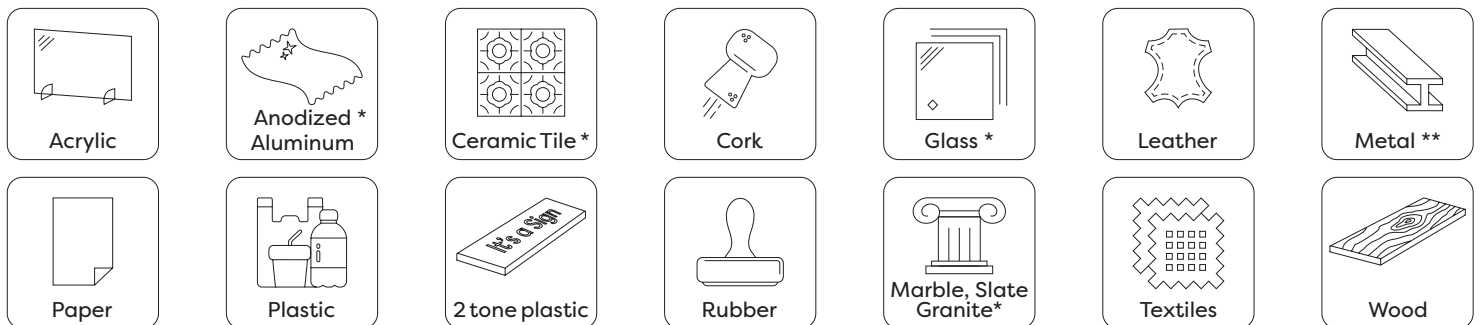
|                          |  |
|--------------------------|--|
| Laser Source:            | 130W CO <sub>2</sub> sealed glass tube (DC excited)  |
| Work Area:               | 1600 x 1000mm (51.2 x 35.4")   |
| Z axis height:           | 230mm  |
| Dimensions WxDxH:        | Front door closed: 2200 x 1505 x 1040mm  |
| Net Weight:              | 370kgs   |
| Operating Modes:         | Optimized raster (engraving), vector (cutting)   |
| Display Panel:           | 3" LCD showing current file, total working time, power, and speed settings   |
| Maximum Speed:           | 1000mm/s (40 IPS)  |
| Rotary Compatible:       | Yes  |
| Computer requirements:   | Windows 7 or later, macOS 10.11 or later, and certain 64 bit Linux   |
| File Formats:            | Lightburn supports AI, BMP, DXF, JPG, PDF, PNG, SVG, TIF and many other formats  |
| Computer interface:      | USB, Ethernet  |
| Cooling:                 | Water cooled   |
| Motor:                   | High-speed closed-loop hybrid encoded motors   |
| Dual Air Assist:         | Low and High air pressure, software controlled in Lightburn by layer   |
| Electrical requirements: | 230 volts, 50 Hz, single phase   |
| Ducting requirements:    | 8" (200mm) - we recommended dedicated, vertical discharge, hard ducting<br>ITS Ltd can recommend suppliers and contractors to assist with this |

### Optional Extras

- Rotary - 3 jaw chuck with tail end stock  
Dimensions: (WxDxH) - 600 x 150 x 170mm  
Maximum Part Size:  
Length 290mm / Diameter 100mm  
**\$795**
  - HR Head  
(for high resolution engraving)  
**\$525**
  - 4" Head  
(for cutting material over 10mm)  
**\$395**
  - 1.1kW Oil free air compressor  
with moisture trap and regulator  
**\$795**
  - BlazeCut - 4.0m  
**\$571**
  - Installation, and basic training  
from **\$800**  
plus any travel expenses  
*Extra training is available  
by appointment*
- Prices ex GST**  
**Pricing valid 1 Jun - 31 Dec 2024**

### Materials

Thunder Laser CO<sub>2</sub> laser's can cut and engrave a variety of materials, including:



\* Engrave only / \*\* Engraving using a marking solution