

THUNDER

LASER NZ

Product Features

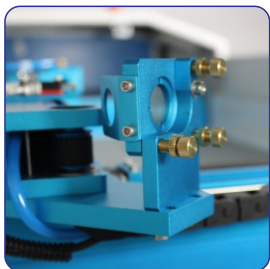
- 130W CO₂ glass laser tube
- 1300 x 900mm work area
- High speed hybrid motors
- Motorised Z axis table
- Rotary ready
- Pass-through door design
- Red Dot pointer
- Dual Air Assist

Safety Features

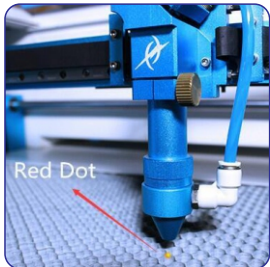
- Two Fire detectors fitted
- Open cover protection
- Status lamp
- Emergency stop

Our Support

- Parts available in NZ
- NZ-wide backup & support
- 24 month warranty on parts
- 12 month warranty on laser tube
- 30 day warranty on the lens



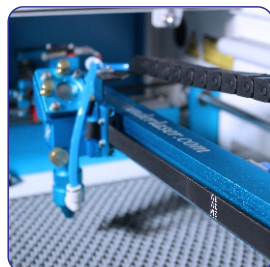
Beam adjustment
Fine pitch adjustment for the mirrors to maintain perfect beam alignment



Visible Red Dot Pointer
See exactly where your laser will cut and engrave



Emergency Stop



High quality X & Y rails
Faster speeds and high quality results with vector cutting and raster engraving



Lightburn software
Better software for laser cutters.



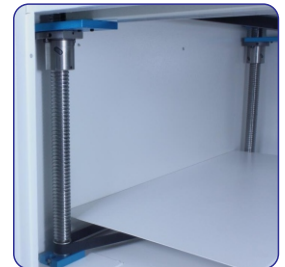
Industrial water cooling
Keeps the laser tube temperature regulated

NOVA 51

NZD **\$24,155.00**
+gst



LCD control panel
Simple operation, files saved in the controllers memory



Z Axis work table
230mm of depth.

THUNDER

LASER NZ

Thunder Laser New Zealand offers high quality machines with after sales support for parts and service.

The 130W Nova 51 is a CO₂ laser that can cut and engrave a wide variety of projects. Our machines deliver exceptional results across many industries including, manufacturing, design, hobbyists, and education.

NOVA 51

NZD \$24,155.00
+gst



Specifications

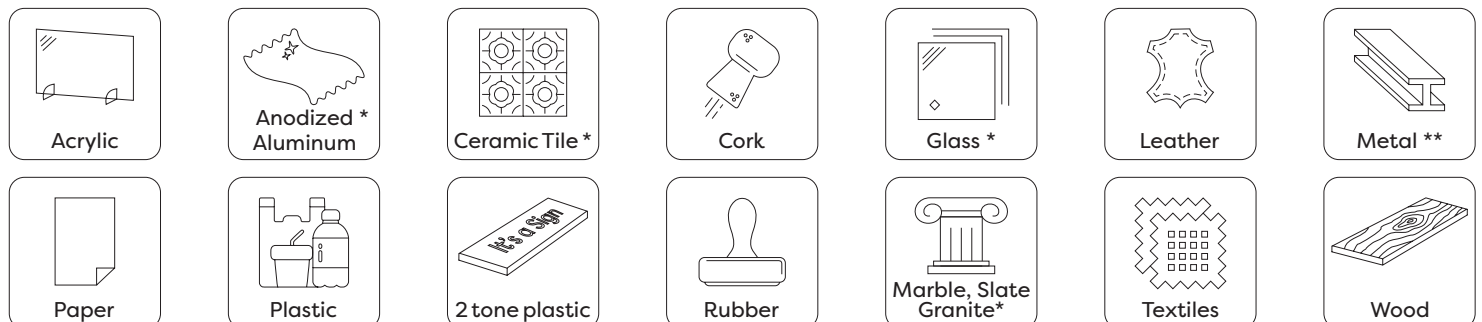
Laser Source:	130W CO ₂ sealed glass tube (DC excited)
Work Area:	1300 x 900mm (51.2 x 35.4")
Z axis height:	230mm
Dimensions WxDxH:	Front door closed: 1900 x 1405 x 1040mm
Net Weight:	325kgs
Operating Modes:	Optimized raster (engraving), vector (cutting)
Display Panel:	3" LCD showing current file, total working time, power, and speed settings
Maximum Speed:	1000mm/s (40 IPS)
Rotary Compatible:	Yes
Computer requirements:	Windows 7 or later, macOS 10.11 or later, and certain 64 bit Linux
File Formats:	Lightburn supports AI, BMP, DXF, JPG, PDF, PNG, SVG, TIF and many other formats
Computer interface:	USB, Ethernet
Cooling:	Water cooled
Motor:	High-speed closed-loop hybrid encoded motors
Dual Air Assist:	Low and High air pressure, software controlled in Lightburn by layer
Electrical requirements:	230 volts, 50 Hz, single phase
Ducting requirements:	8" (200mm) - we recommended dedicated, vertical discharge, hard ducting ITS Ltd can recommend suppliers and contractors to assist with this

Optional Extras

Rotary - 3 jaw chuck with tail end stock Dimensions: (WxDxH) - 600 x 150 x 170mm Maximum Part Size: Length 290mm / Diameter 100mm	\$795
HR Head (for high resolution engraving)	\$525
4" Head (for cutting material over 10mm)	\$395
1.1kW Oil free air compressor with moisture trap and regulator	\$795
BlazeCut - 3.0m	\$505
Installation, and basic training from	\$800
plus any travel expenses <i>Extra training is available by appointment</i>	
Prices ex GST	
Pricing valid 1 Jun - 31 Dec 2024	

Materials

Thunder Laser CO₂ laser's can cut and engrave a variety of materials, including:



* Engrave only / ** Engraving using a marking solution

3/9/24

115 Isaac Road, Eyrewell Forest
Rangiora, RD6
New Zealand 7476

M: 027 298 7777
E: info@itsnzltd.com

